



THE STUDCO UPDATE

NEWS & UPDATES FROM STUDCO BUILDING SYSTEMS

EDITION 21

30

STUDCO CELEBRATES 30 YEARS

1986 - 2016

STORY PAGE 2



Studco Australia is celebrating its 30 Year Anniversary

From humble beginnings in 1986 as a steel stud roll former in Melbourne, Australia, Studco has developed into a truly global manufacturer of premium building systems for the commercial and residential construction industry.



Today the Studco team can be found all over the globe providing an international network for operations, logistics and customer service

With 30 years of experience Studco has been able to forge a national and international footprint moving to the US in 2006 and now launching in the UK in 2016.

“Studco will take the strength of its successful 30 year history – innovativeness, stability, reliability,

customer focused and solutions driven to build an enduring future with a national footprint and continuing development of new products to enhance its position as a quality, responsive solution provider to its customers”- Phillip Harvey, Global CEO.

Studco would like to thank those businesses who supported our 30th anniversary celebrations - a great time was had by all staff and their families. ■



Studco Founder Gordon Stevens (centre), with Global Managing Director Ben Stevens (left) and Global CEO Phil Harvey at the 30th celebrations.



AWCI Conference Darwin

This year Studco travelled all the way to hot and humid Darwin to exhibit at the 2017 AWCI Annual Conference.

With the location of Darwin the team took advantage of a perfect opportunity to feature the Studco Tough brand which boasts a very proud Crocodile. To add a bit of excitement a live croc and snake

made an appearance at the Studco stand allowing the conference attendees to get up and close with the local inhabitants.

With a great turn out of contractors and suppliers the four days were spent soaking up the products, services and information this industry had on display and exhibiting all that Studco has to offer. ■



Handling with care; Kate Ormond, Adam Meadows and Phil Harvey in attendance at the 71st AWCI Conference in Darwin.

Project Profile

Platinum Tower

One of Melbourne's latest developments is pushing architecture boundaries with a towering 80 stories and featuring one of the world's largest vertical gardens.



Platinum Tower is a stunning new feature to inner city Melbourne and takes luxury residential apartments to a whole new standard.

This iconic design called for Studco Concealed Ceiling Systems, Steel Stud Systems and utilized Resilmount Sound Isolation Solutions to ensure the highest of quality of living for residents.

EzyFinishing Systems were also chosen as the perfect range for modern interior finishes that feature contemporary clean lines complimenting the entire design concept.

Studco were also able to contribute to the tower providing comprehensive engineering support to critical areas of the project including the pool ceiling at level 50.

With 52 levels and over 430 apartments this development has introduced an urban address immersed in the culture Melbourne is known for and within walking distance from the cbd, Platinum Tower is an eagerly sort after residential hub. ■



Builder: Brookfield Multiplex

Developers: Salvo Property Group

Location: Melbourne

Value: \$280 million

Date: 2016



Alubase Shadowline aluminium skirting

Studco is pleased to announce the arrival of Alubase Shadowline aluminium skirting board profile, an architectural shadowline profile for modern interiors that boasts completely concealed fixing and a clean line flush finish.

In the past, shadowline skirting boards have been created using a variety of steel, aluminium and metal sections, leading to complicated installation and occasionally cracking of the finished wall. The one-piece Alubase Shadowline profile is the new solution to this common problem.

Alubase Shadowline is at home in any modern commercial or domestic space and provides a distinctive 10 x 10mm shadowline recess above a 90mm skirt to the floor line. Alubase Shadowline is designed and approved for use in conjunction with the Ezy-Jamb flush finish door jamb system, perfectly complimenting the clean line finish of Ezy-Jamb and EZconcept products.

Joiner tabs are provided to accurately aligned straight joints and corner intersections of Alubase Shadowline 3.6 metre sections. ■



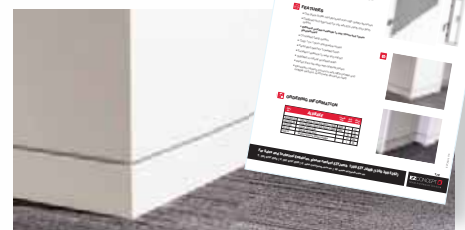
Key Features...

- One-piece profile manufactured from high quality aluminium
- Different profiles available to suit 10mm and 13mm plasterboard
- Concealed fixing system
- Crisp 10 x 10mm shadowline recess
- Perforated bead from trowelled finish
- Excellent resilience to wear and impact
- Supplied in natural anodised finish

Next steps...

- Order a sample section. Next day delivery.
- Alubase Shadowline is now in stock. Place your order now.
- Download the Alubase Shadowline datasheet.

Call 1800 788 326 or email sales@ezyjamb.com.au today!



Project Profile

Barangaroo

Sydney is currently undergoing one of the largest urban redevelopments in the world.

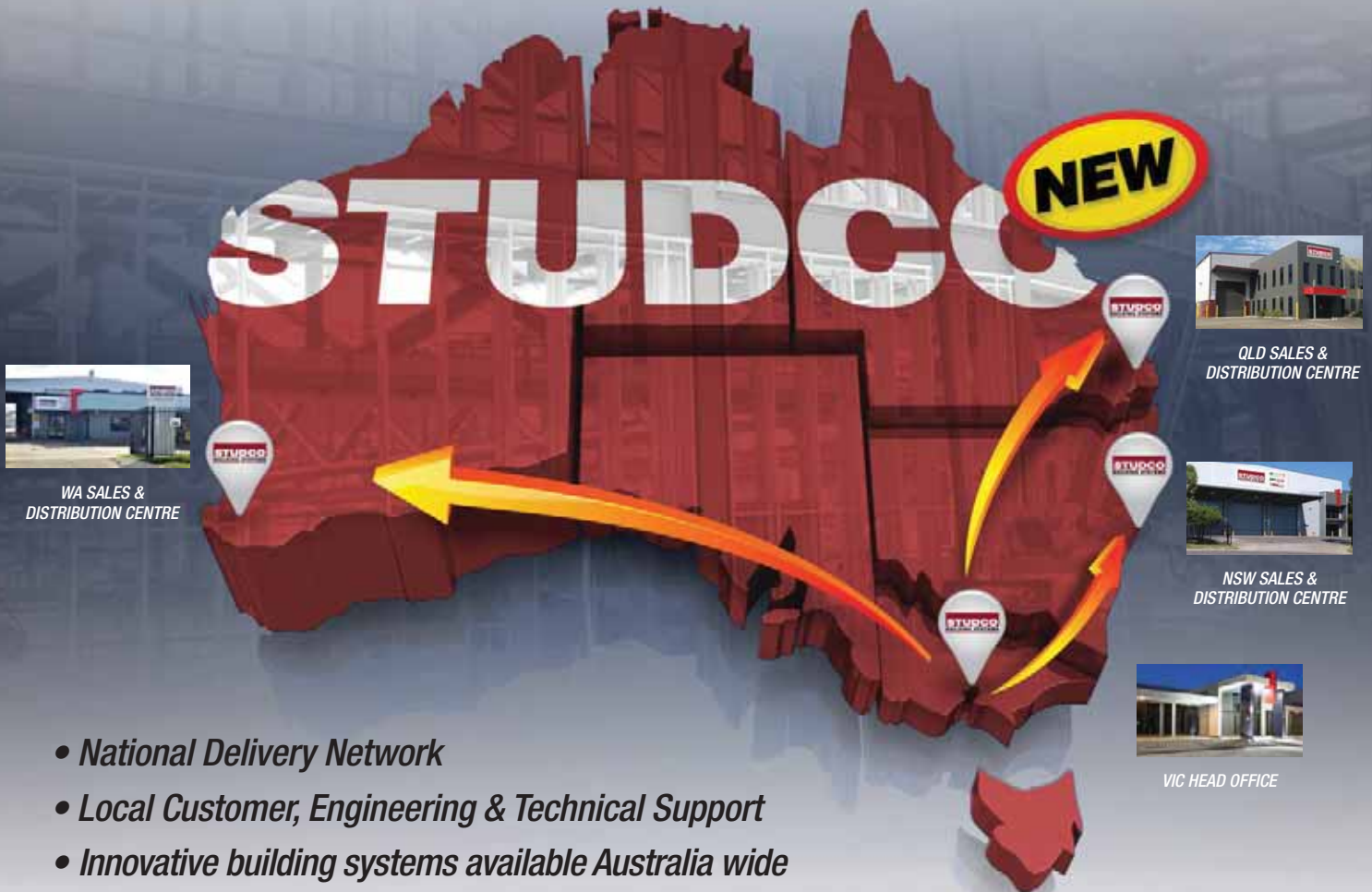
The Barangaroo precinct is 22 hectares and worth over \$6 billion. This revival of the western edge of Sydney harbour will be able to offer the space needed for over 24,000 jobs and generate close to \$2 billion per annum to the NSW economy.

Studco was tasked in providing concealed ceiling systems and steel stud systems for the 38 level office tower. Having been awarded a 6-star green star rating this innovative redevelopment was designed by award-winning UK architect Rogers Strick Harbour + Partners.

Studco collaborated closely with Lend Lease before construction started and throughout the project. ■



Builder: Lend Lease
Architect: Rogers Strick Harbour & Partners
Location: Sydney
Value: \$6 billion
Developer: International Tower Sydney Trust



- *National Delivery Network*
- *Local Customer, Engineering & Technical Support*
- *Innovative building systems available Australia wide*

Studco has you covered

Studco is pleased to announce the opening of our new sales and distribution centre in Yatala QLD.

Strategically located in this industrial hub the QLD branch further reinforces Studco's national support network. This new facility will further enable our strategic growth and improve operational efficiencies offering;



Queensland
17 Telford Circuit
Yatala QLD 4207

• Local Product Supplies

- Full range of Studco innovative building systems including our patent EZConcept range

• Warehouse Capabilities

- Fully enclosed and monitored warehouse with state of art national logistic support technology
- Easy Access with Drive in – Drive out for deliveries and pickups and full b-double access

• Sales & Technical Support

- Dedicated Sales and Technical team available five days a week throughout QLD
- Engineering and Design Capabilities

Call the Leaders in Innovative Building solutions today.

1300 255 255
WWW.STUDCOSYSTEMS.COM.AU



EZConcept Launches New BIM Library



As BIM continues to change the way we design and construct new buildings, EZConcept is pleased to announce the arrival of comprehensive BIM files for Ezy-Jamb and Ezy-Pelmet products in the popular Autodesk Revit format.

After careful collaboration with architects, builders and BIM specialists, EZConcept has 'test driven' the new BIM files on several recent projects and been given the thumbs up by all stakeholders involved.

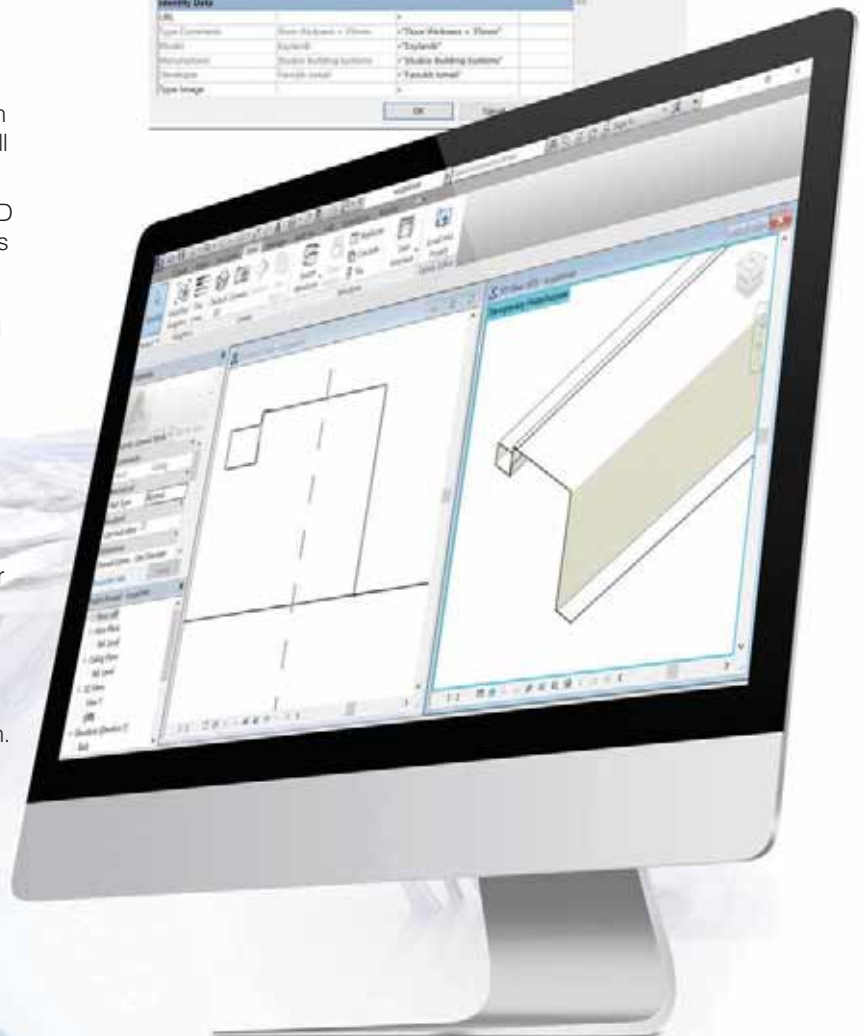
BIM, or building information modelling, is a powerful 3D CAD process that is used to create, plan and document buildings and constructions in the modern digital age in which we live, with many architectural studios requesting high-quality, data-rich BIM families for popular products in order to avoid costly mistakes on site.

EZConcept BIM objects feature parametric design settings which easily integrate Ezy-Jamb into any wall and Ezy-Pelmet into any ceiling and gives you the flexibility to simply modify the object to create project specific drawing details. EZConcept's BIM files are available for free download from Studco's website www.ezconcept.com.au. EZConcept BIM includes 3D and 2D representations of each object together with embedded product data to support the specification and provide a 'life-of-building' audit trail.

At this stage, only Ezy-Jamb Classic Adjust (EZC) flush finish door jambs with hirline hinge or concealed hinges are available in Revit files. More Ezy-Jamb profiles coming soon. Custom BIM objects and details are available on request from the in-house BIM experts at EZConcept.

EZConcept has also taken the opportunity to refresh the many popular 2D and 3D CAD files for Ezy-Jamb and Ezy-Pelmet, which are also available for free download.

Watch this space as more BIM files are rolled out for products from the EZConcept and Studco range. ■





USA Project Profile

520 West 28th

The much sought after residential development is super starchitect Zaha Hadid Designs first NYC building.

Zaha Hadid's international body of work is largely defined by graceful curves inspired by nature. She brings this sensibility to 520 West 28th, marking a dramatic shift away from the hard angles that dominate standard residential architecture.

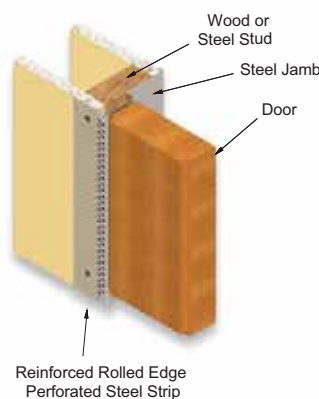
The building's elegant hand-rubbed metal facade is driven by one continuous line, which loops its way skywards. These dynamic curves create a distinctive chevron pattern that embraces interlacing levels, maximizing privacy and security between residences. As the chevron weaves up from the ground, its folds create a multi-level design that links residence exteriors and interiors together in one sweeping movement. The result is a vertical landscape sitting directly on the High Line, comprising of 39 unique residences.

Ezy-Jamb SRC and ISD frames prepared for concealed hinges were chosen to compliment the simplistic, contemporary interior spaces. ■



Ezy-Jamb continues winning streak in US

Ezy-Jamb walks away with another WIN at the 2016 US Architectural Record Magazine Awards.



For a second year running Ezy-Jamb has been acknowledged for its unique design of architectural products that support a strong commitment to innovation, usefulness and aesthetics.

In 2015 the Ezy-Jamb SRC Single Rabbet Trimless Doorframe impressed Architectural Record's judges being awarded the winner in the "Openings" category and now in 2016 the Ezy-Jamb ISD Inswing Door Jamb has been given the same honor. The InSwing frame system is designed for the door to be flush with the wall on the exterior side of the opening, but allows the door to swing into the room.

"To be recognised two years in a row is a great achievement for Ezy-Jamb, it really emphasizes the boundaries we are pushing and the innovation that is going into our new product development" says Ezy-Jamb North America Sales Manager Brandon Johnson

For more information on Ezy-Jamb and the wider EZConcept range click here to discover how flush finish walls and ceilings can set your next project apart from the crowd. ■

TECH TIPS

Jamb Stud Design For Internal Doorways - Part 2

In a recent Studco Tech Tip on jamb stud design for internal doorways, we posed the question "What is the strongest, most reliable way to frame up for internal doorways?" In response to this article, we received a number of requests from commercial builders to discuss non-compliance and the inferior techniques we have witnessed on site. In the next two editions of The Studco Update, we will discuss these issues but please also read Part 1 of this Studco Tech Tip, available on www.studcosystems.com.au.

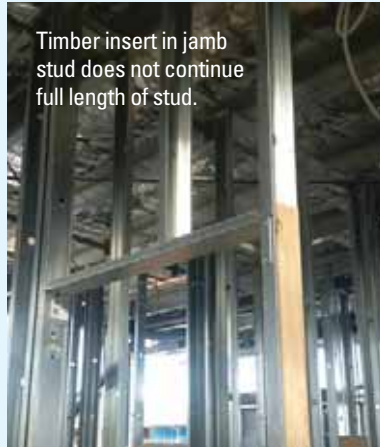
Single Light Gauge Steel Stud

"I have always run my light gauge partition studs right through a wall including the doorway, the same way as I used to run timber studs right through."

Using a single standard steel wall stud in 0.55mm gauge as jamb studs in internal doorways is a disaster waiting to happen. In such installations, cracked plasterboard linings should be treated as a foregone conclusion: 'when' it cracks, not 'if' it cracks. Internal light gauge steel framing systems are designed to have relatively high lateral deflection properties (easily bowed) and when a door is forcibly slammed against such flimsy installations, the wall structure comes under immense pressure to absorb the force and the wall often deflects beyond the elasticity limits of plasterboard which causes the plasterboard to crack and the setting compound to break away.



Internal doorway framed with single 0.55mm steel stud.



Timber insert in jamb stud does not continue full length of stud.

Light Gauge Steel Stud With Timber Insert

"I just throw a bit of pine stud inside the steel stud and it works fine."

If the timber stud is at least 90 x 35mm, neatly fitted inside the steel stud and it adequately fixed directly to the base structure at the top and bottom, then you should be fine. But obviously this application takes time and skill to get it right and consequently we mostly see corners being cut and generally the timber stud is about 75% of the length of the steel stud and is not fixed to the structure at the top or the bottom, meaning that the weight of the door and pressure of any slamming, is being transferred through to the single light gauge stud at the point where the timber stops. In such cases, the timber adds very little strength to jamb studs and the overall wall system, resulting in cracked walls. Where full length timber inserts are used, the timber must be fixed to the structure at top and bottom with Studco M104 brackets or equivalent.

Internal Doorways At Platinum Tower

Studco recently completed supply of internal wall systems to Platinum Tower in Southbank, Victoria. This high-quality 52 storey development demanded careful consideration of the rough framing design around the internal entrance doors. For premium build quality and peace of mind, Mark Moran, site foreman for walls contractor Expoconti, chose Studco HEDAJamb tough wall studs. "I needed a product I could trust to make sure the doorways wouldn't crack and result in latent defects", Mark said. "So I decided to use Studco's HEDAJamb studs and it worked perfectly. Easy to install and super strong." ■



Platinum Tower, Southbank Victoria