

# SLIMWALL CHANNEL

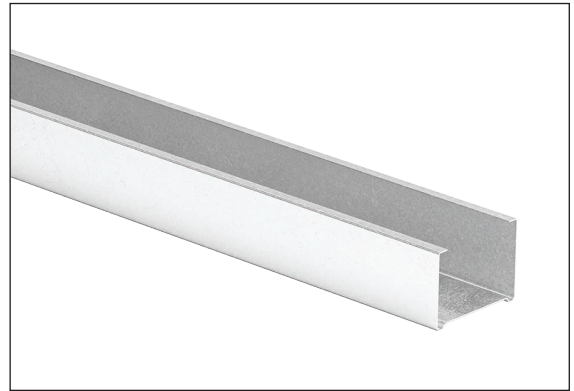
M355

Leaders in Innovative  
Building Products

## PRODUCT DESCRIPTION

SlimWall is the energy efficient battened wall system that is code compliant to NCC 2011 Section J (BCA 2011) Energy Efficiency criteria; offering a substantially improved method for battening the interior surfaces of external walls by enabling a larger wall cavity to be created, minimising thermal transfer and maximising energy efficiency.

The Studco SlimWall system has been fully engineered for structural integrity, is endorsed by major Australian insulation manufacturers. So whether you're chasing 6 Star Green Star on your next project or you just need a fast, flexible and fully code compliant wall system, choose the unique, new Studco SlimWall.



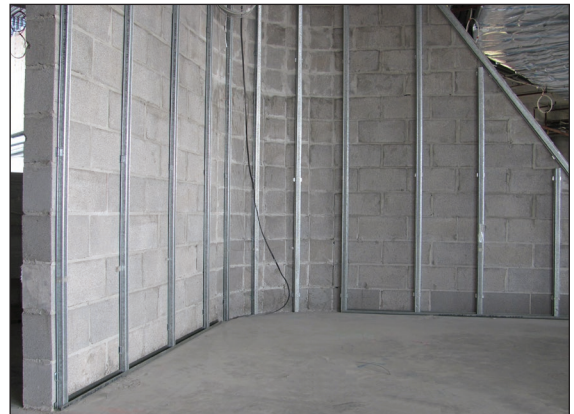
M355

## FEATURES

- Code compliant to NCC 2011 Section J (BCA 2011) Energy Efficiency criteria.
- Fully adjustable for use on uneven surfaces.
- Suitable for use with any wall structure, including precast concrete panels, masonry walls, timber framing and lightweight steel stud systems.
- Manufactured in Australia from high quality, Australian steel.

## INSTALLATION

Once the SlimWall M163 brackets are fixed to the external wall using shot pins or masonry anchors, the Studco SlimCeil M355 channel is inserted into the brackets and screwed in, achieving a secure and permanent fixing that can support a wide variety of lining board types and weights.



INSTALLATION

## APPLICATION

For use within energy efficient wall system applications.

## PRODUCT RANGE

### Ordering Information

Product Code	Product Info	Width (mm)	Depth/Height (mm)	Length (mm)	Thickness BMT (mm)	Approx Kg / Piece	Sub Pack	Stock Pack
M355	SlimWall 35mm Low Clearance Channel 0.50 BMT	35	36	3000 / 3600 / 4800	0.50	0.54	10	100

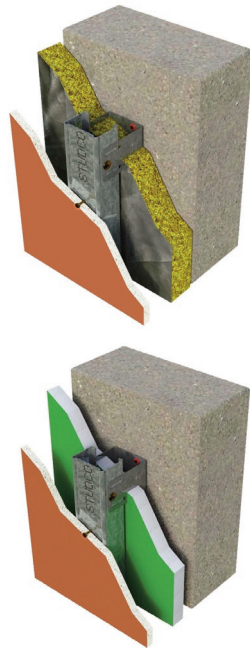
Product Datasheet

# SLIMWALL CHANNEL

M355

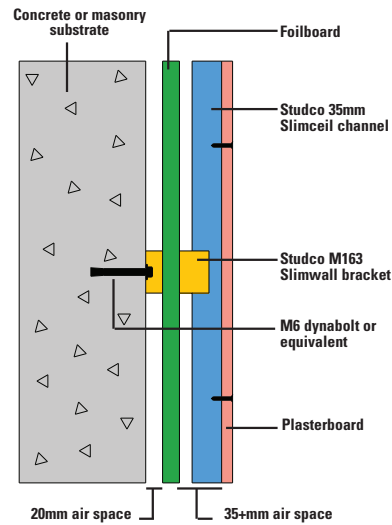
Leaders in Innovative  
Building Products

## INSTALLATION



Studco Slimwall system used with CSR Bradford foil-faced builders blankets to achieve R2.8 rating.

Studco Slimwall system used with foilboard insulation to achieve R1.8 rating.



## WARRANTY

This product is covered by Studco's Warranty. Conditions and limitations of warranties are set out in Studco Project Warranty certificate.

## FURTHER ASSISTANCE

Contact the Technical Team at Studco for assistance with specifications, product selection, acoustic engineering, and structural engineering enquiries. Call on 1300 255 255 or contact us at [sales@studcosystems.com.au](mailto:sales@studcosystems.com.au).

## ACCREDITATION



Product Datasheet

**For Sales Enquiries, please contact Studco Building Systems on 1300 255 255**